

NORTHWEST GREEN HOME TOUR GUIDE



With
**Bonus Remote
 site Locations
 on Sunday
 April 27**

NORTHWEST GREEN HOME TOUR



FREE educational event,
 showcasing local
 sustainable and "green"
 new homes, remodels,
 DADUs, and energy retrofits.

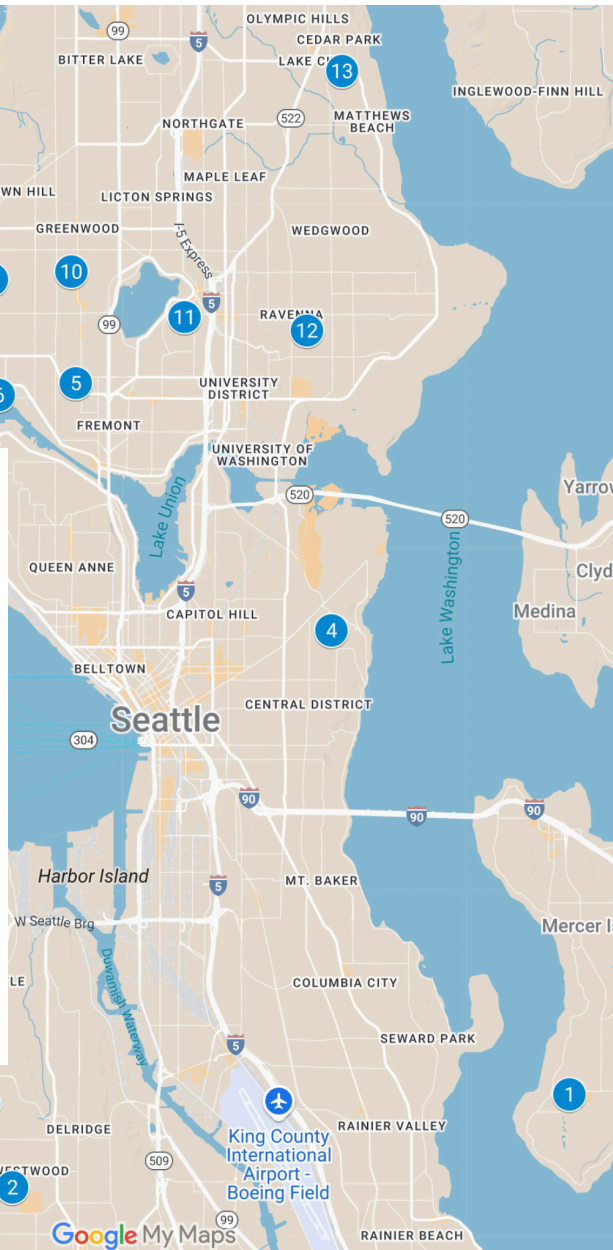
nwgreenhometour.org

**April 26
 2025**

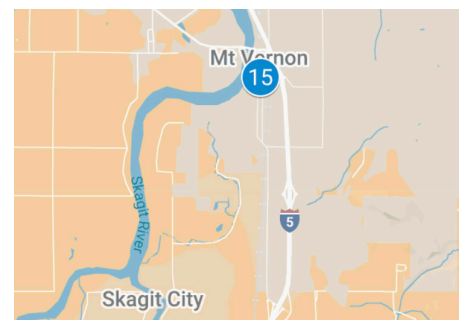
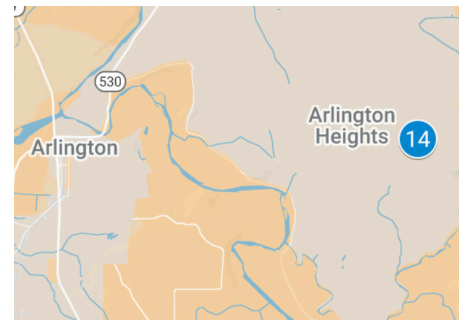
Addresses and
 site descriptions
 are on the back.

2025 NW Green Home Tour Sites

- 1 Architect's Home + Guest House (DADU)
- 2 MHD Development Project
- 3 West Seattle Carriage House
- 4 Alder House Deep Energy Retrofit
- 5 Greenwood Powerhouse
- 6 PCC Markets - Ballard
- 7 Brick Beauty With A View
- 8 Salmon Bay Passive House
- 9 Energy Technologies Ballard Showroom
- 10 Phinney Ridge SFR + DADU
- 11 Green Lake Deep Energy Retrofit
- 12 Ravenna Remodel and Second Story
- 13 Rob's Clever Cottage [DIY-ICF]
- 14 Rooted Northwest Agrivillage Co-Housing
- 15 Mount Vernon Library Commons



Sunday Remote sites



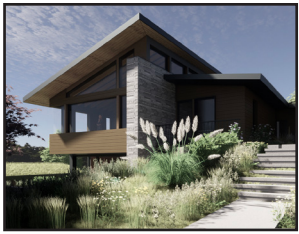
Scan here
 TO GET TICKETS
 AND TO VIEW
 MORE DETAILS
 FOR EACH SITE.

For an interactive map, detailed
 site descriptions, additional photos
 and the list of green features for
 each site on the Tour, please visit
nwgreenhometour.org

2025 PROUD SPONSORS:



VISIT NWGREENHOMETOUR.ORG FOR MORE INFORMATION



#1 - Architect's Home + Guest House
Suzanne Zahr, Inc. + Pivot Windows
 8110 SE 70th St, Mercer Island, WA 98040

Beautiful, durable, and sustainable, these buildings are designed to comfortably nestle into the sloped site, creating unique indoor / outdoor spaces throughout.



#2 - MH Development Project
Mighty House Construction + Ming Architecture + Design
 8627 30th Ave SW, Seattle, WA 98126

A behind the walls looks at the sustainable features of building 3 dwellings on a single-family lot in the middle of the city.



#3 - Carriage House: DADU & Remodel
Mighty House Construction + SAGE Designs NW + Lucy Johnson Interiors
 6934 37th Ave SW, Seattle, WA 98126

Detached Accessory Dwelling Unit (DADU) with a two-car garage and renovation of the main home for multi-generational living.



#4 - Alder House Retrofit
SHED Architecture & Design
 303 33rd Ave E, Seattle, WA 98112

Small kitchen addition and interior and exterior renovation including a whole house deep energy retrofit that aims for net zero performance.



#5 - Greenwood Powerhouse
The Green Builder
 4809 Greenwood Ave N, Seattle, WA 98103

Technically remodeled due to zoning requirements, but for all intensive purposes it is new construction on a "pretty good house model."



#6 - PCC Ballard Location
PCC Ballard Location
 1451 NW 46th St, Seattle, WA 98107

PCC's Ballard location was the first "Living Building" grocery store in the world, meeting the Petal Certification, which is the world's most rigorous green building standard.



#7 - Brick Beauty With A View
Velocipede Architects + Mighty House Construction
 3243 NW 64th St, Seattle, WA 98107

1941 brick-clad house second-story addition and remode with passive house strategies and a covered upper-floor west-facing deck offering 180-degree views of Puget Sound.

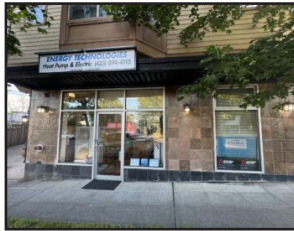


For an interactive map and detailed site descriptions, additional photos and the list of green features for each site on the Tour, please visit nwgreenhometour.org



#8 - Salmon Bay Passive House
First Lamp Architects
 2016 NW Canoe Pl, Seattle, WA 98117

Highest standards of sustainable construction without compromising on beauty, functionality, or connection to the surrounding environment.



#9 - Energy Technologies Showroom
Energy Technologies
 7311 - 15th Ave NW, Unit C-1, Seattle, WA 98117

Features include ducted and ductless heat pumps and a heat pump water heater. We will offer refreshment and a drawing for one \$50 Starbucks gift card.



#10 - Phinney Ridge SFR + DADU
Targa Homes + Pivot Windows
 131 N 75th St, Seattle, WA 98103

Come see an active site pre-insulation! We will take you through the construction, windows and sliding doors, enclosure, and systems of these new homes.



#11 - Green Lake Deep Energy Retrofit
Carlisle Classic Homes
 102 NE 64th St, Seattle, WA 98115

This project involved adding a primary suite above the 100+ year-old existing house while doing a deep energy retrofit on the whole envelope.



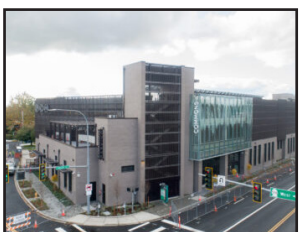
#12 - Ravenna Remodel & Second Story
LastingNest
 6025 29th Ave NE, Seattle, WA 98115

Second story addition kitchen and deep green remodel of this lovely 1942 war box.



#13 - Rob's Clever Collage (DIY-ICF)
S.A.G.E. Designs NW + Joseph Becker
 12303 38th Ave NE, Seattle, WA 98125

This DADU project includes Faswall ICF walls, exposed beams, a loft, a beautiful staircase, and fun windowing.



#14 - Mount Vernon Library Commons
HKP Architects
 208 W Kincaid St, Mount Vernon, WA 98273

Beautiful, durable, and sustainable, these buildings are designed to comfortably nestle into the sloped site, creating unique indoor / outdoor spaces throughout.



#15 - Rooted Northwest Agrivillage Co-Housing Community
Rooted NW Cohousing
 13410 228th St NE, Arlington, WA 98223

Rooted Northwest is a forming Agrivillage where each homeowner will help to preserve a swath of a historic 240 acres of valuable farmland.

PRESENTED BY THE

The Northwest EcoBuilding Guild is a 501(c)(3) community of builders, designers, suppliers, homeowners, and partners concerned with ecological building in the Pacific Northwest.



Scan here to make a DONATION TO THE NORTHWEST GREEN HOME TOUR!