

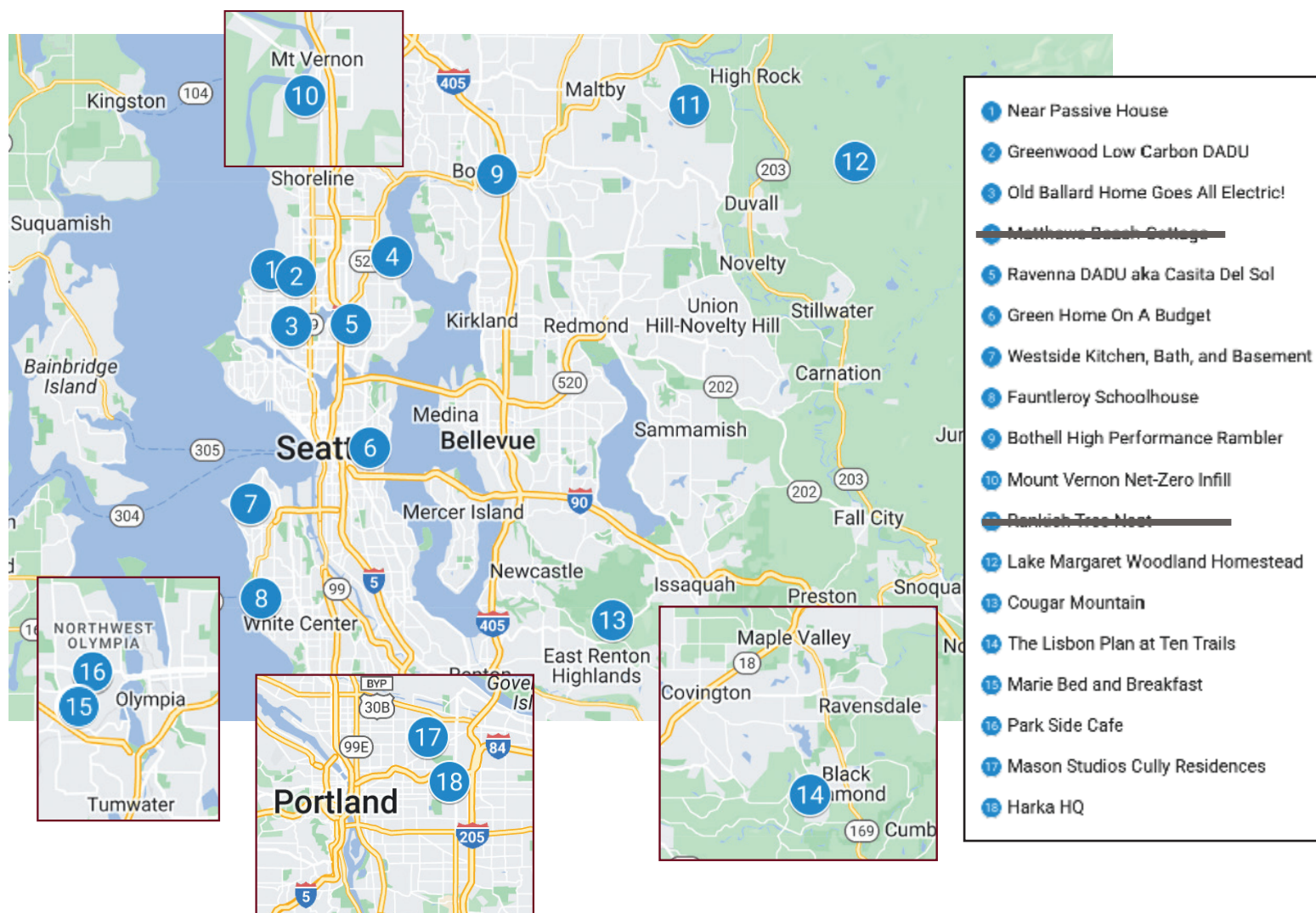
Saturday, APRIL 29, 2023 | 11:00am-5:00pm



NORTHWEST  
**GREEN  
HOME**  
TOUR

**TOUR GUIDE  
AND MAP**  
NWGREENHOMETOUR.ORG

**APRIL 29  
2023**



2023 PROUD SPONSORS:



scan here  
to make a  
donation  
to the NW  
green HOME  
TOUR!





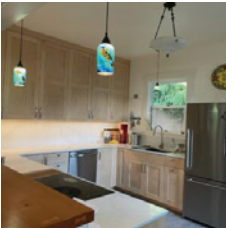
saturday, APRIL 29, 2023 | 11:00am-5:00pm



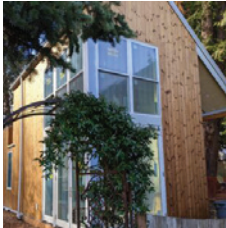
**#1 - Near Passive House**  
**Carlisle Classic Homes**  
1711 NW Greenbriar Way, Seattle, WA 98177  
FEATURES: Advanced Building Envelope, Design Innovation, Energy Efficient, Energy Star Appliances Indoor Air Quality, Materials Efficiency, Smart Controls, Storm Water Management



**#2 - Greenwood Low Carbon DADU**  
**Targa Homes/Freehand Studio**  
9753B 1st Ave NW, Seattle, WA 98117  
FEATURES: Advanced Building Envelope, Design Innovation, Electric Vehicle Charging, Energy Efficient, Energy Star Appliances, Indoor Air Quality, Materials Efficiency, Small Square Footage, Smart Controls, Solar Power, Storm Water Management, Water Conservation



**#3 - Old Ballard Home Goes All Electric!**  
**Balderston Associates**  
6026 5th Ave NW, Seattle, WA 98107  
FEATURES: Energy Efficient, Energy Star Appliances, Indoor Air Quality



**NOT AVAILABLE TO TOUR**  
~~**#4 - Matthews Beach Cottage DADU**~~  
~~**Abode Builders/Sandpoint Studios**~~  
FEATURES: ~~Advanced Building Envelope, Electric Vehicle Charging, Energy Efficient, Energy Star Appliances, Indoor Air Quality, Materials Efficiency, Small Square Footage, Solar Power~~



**#5 - Ravenna DADU aka Casita del Sol**  
**S.A.G.E. Design NW/Lastingnest, Inc.**  
6313 14th Ave NE, Seattle, WA 98115  
FEATURES: Design Innovation, Energy Efficient, Energy Star Appliances, Green Roof, Indoor Air Quality, Materials Efficiency, Small Square Footage



**#6 - Green Home On A Budget**  
**A & R Solar**  
501 27th Avenue, Seattle, WA 98122  
FEATURES: Design Innovation, Electric Vehicle Charging, Energy Efficient, Energy Star Appliances, Indoor Air Quality, Materials Efficiency, Solar Power, Storm Water Management, Urban Farming, Water Conservation



**#7 - Westside Kitchen, Bath, and Basement Remodel**  
**Mighty House Construction/ Lucy Johnson Interior Design**  
4931 SW Forney St, Seattle, WA 98116  
FEATURES: Energy Efficient, Indoor Air Quality, Materials Efficiency, Small Square Footage



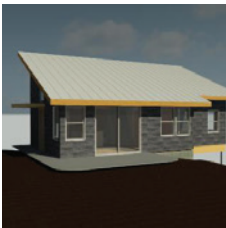
**#8 - Fauntleroy Schoolhouse**  
**King County/SPU Rainwise**  
9131 California Ave SW, Seattle, WA 98136  
FEATURES: Equity Endeavor, Storm Water Management, Water Conservation



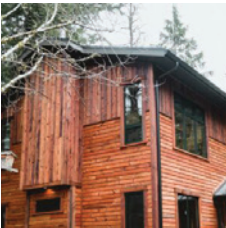
**#9 - Bothell High Performance Rambler**  
**Velocipede Architects/ Heartwood Builders**  
10923 Valley View Road, Bothell, WA 98011  
FEATURES: Advanced Building Envelope, Electric Vehicle Charging, Energy Efficient, Indoor Air Quality



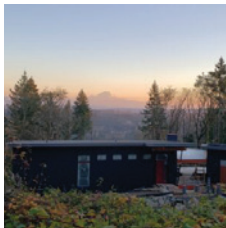
**#10 - Mount Vernon Net Zero Infill**  
**Walter Street Cottages, LLC**  
1724 S Walter St., Mount Vernon, WA 98273  
FEATURES: Advanced Building Envelope, Electric Vehicle Charging, Energy Efficient, Energy Star Appliances, Indoor Air Quality, Solar Power, Storm Water Management



**NOT AVAILABLE TO TOUR**  
~~**#11 - Rankich Tree Nest**~~  
~~**Sno Valley Cottages/Kelly Rankich**~~  
22113 E Lost Lake Rd., Snohomish, WA 98296  
FEATURES: ~~Advanced Building Envelope, Design Innovation, Electric Vehicle Charging, Energy Efficient~~



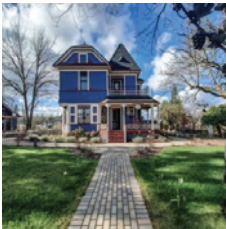
**#12 - Lake Margaret Woodland Homestead**  
**Sno Valley Cottages**  
19406 327th Ave NE, Duvall, WA 98019  
FEATURES: Advanced Building Envelope, Design Innovation, Electric Vehicle Charging, Energy Efficient, Energy Star Appliances, Indoor Air Quality, Materials Efficiency, Small Square Footage, Smart Controls, Solar Power, Water Conservation



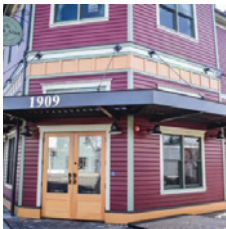
**#13 - Cougar Mountain Passive**  
**Velocipede Architects/ Sunshine Construction**  
10510 181st Ave SE, Issaquah, WA 98027  
FEATURES: Advanced Building Envelope, Electric Vehicle Charging, Energy Efficient, Energy Star Appliances, Indoor Air Quality, Solar Power



**#14 - The Lisbon Plan at Ten Trails**  
**Ichijo USA**  
33545 Walnut Ave SE, Black Diamond, WA 98010  
FEATURES: Advanced Building Envelope, Design Innovation, Energy Efficient, Energy Star Appliances, Materials Efficiency



**#15 - Marie Bed and Breakfast**  
**West Central Park (Olympia)**  
123 Cushing St NW, Olympia, WA 98502  
FEATURES: Energy Star Appliances, Solar Power, Storm Water Management



**#16 - The Parkside Cafe**  
**West Central Park (Olympia)**  
1909 Harrison Ave NW, Olympia, WA 98502  
FEATURES: Energy Star Appliances, Storm Water Management



**#17 - Mason Studios Cully Residences**  
**Harka Architecture (Portland)**  
5924 NE Mason St, Portland, OR 97218  
FEATURES: Advanced Building Envelope, Design Innovation, Energy Star Appliances, Indoor Air Quality, Storm Water Management



**#18 - Harka Architecture office**  
**Harka Architecture (Portland)**  
7631 NE Glisan St, Portland, OR 97213  
FEATURES: Advanced Building Envelope, Design Innovation, Energy Efficient, Energy Star Appliances, Indoor Air Quality, Materials Efficiency, Small Square Footage, Solar Power, Storm Water Management